

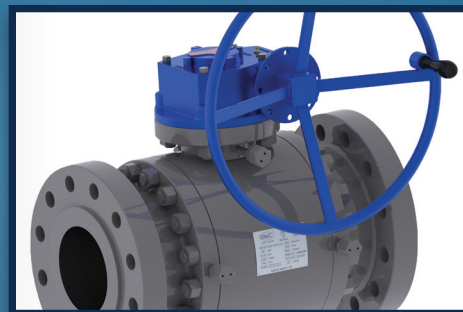
# GWC Valve International

PROVEN TECHNOLOGY

FOR INDIVIDUAL

VALVE SOLUTIONS

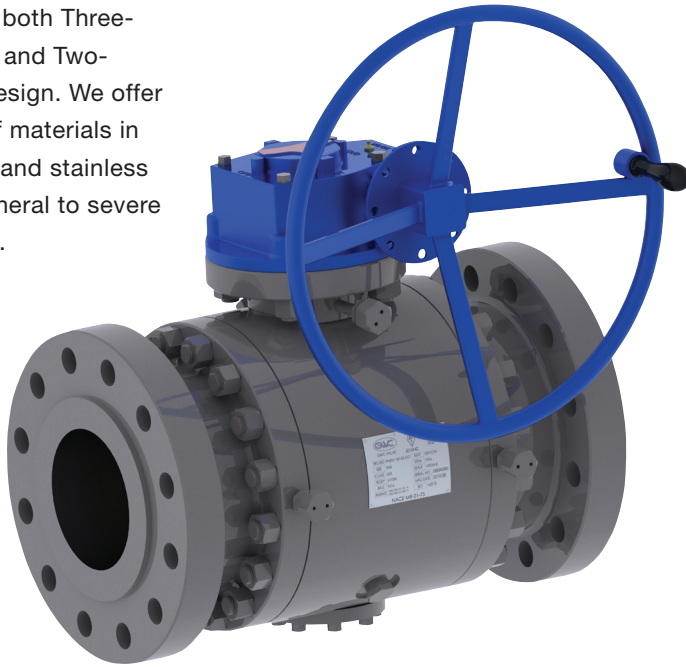
WORLDWIDE



USA HEADQUARTERS  
GWC Valve International, Inc.  
4301 Yeager Way  
Bakersfield, CA 93313  
Website: [www.gwcvalve.com](http://www.gwcvalve.com)

**Forged Body Trunnion Mounted Ball Valves**

GWC produces a full line of API-6D Trunnion Mounted Ball valves in both Three-Piece Forged and Two-Piece Cast Design. We offer a full range of materials in carbon, alloy and stainless steel from general to severe in application.

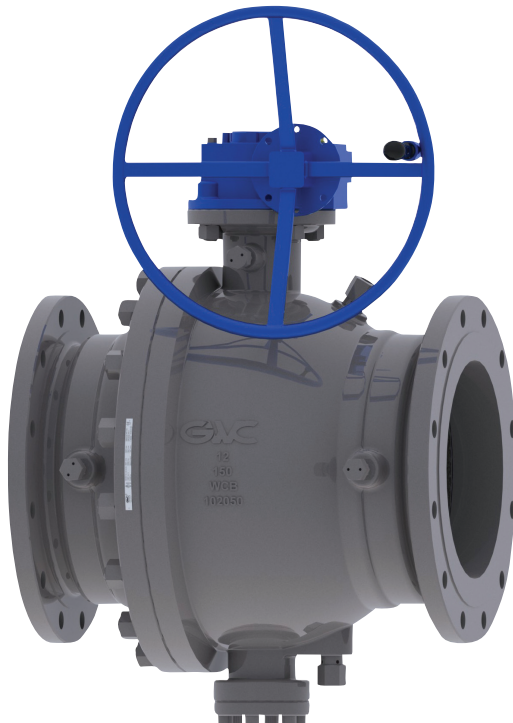


**SIZE RANGE: 2" - 48"**  
**PRESSURE CLASS: ASME 150 - 2500**  
**API 2000 - 5000**  
**API STANDARDS: 6D & 6A**  
**ASME B16.34**

**FEATURES**

- ▶ 3-PIECE BODY
- ▶ FULL AND REDUCED BORE
- ▶ TRUNNION MOUNTED
- ▶ DOUBLE BLOCK AND BLEED
- ▶ ANTI-BLOW OUT STEM
- ▶ ANTI-STATIC DEVICE
- ▶ FIRESAFE TO API-607/6FA
- ▶ SPRING LOADED SEATS
- ▶ SEALANT INJECTION
- ▶ NACE MR-01-75

**Cast Body Trunnion Mounted Ball Valves**



**SIZE RANGE: 2" - 24"**  
**PRESSURE CLASS: ASME 150 - 600**  
**API STANDARDS: 6D**  
**ASME B16.34**

**FEATURES**

- ▶ 2-PIECE BODY
- ▶ FULL AND REDUCED BORE
- ▶ TRUNNION MOUNTED
- ▶ DOUBLE BLOCK AND BLEED
- ▶ ANTI-BLOW OUT STEM
- ▶ ANTI-STATIC DEVICE
- ▶ FIRESAFE TO API-607/6FA
- ▶ SPRING LOADED SEATS
- ▶ SEALANT INJECTION
- ▶ NACE MR-01-75

## Cast Steel Valves Gate, Globe & Check

GWC produces a wide variety of Cast Steel Gate, Globe, and Check valves. Other available designs include cast steel angle valves, O-ring seal block and bleed gate valves and cryogenic valves.



**SIZE RANGE:** 2" - 60"  
**PRESSURE CLASS:** ASME 150 - 1500  
**API STANDARDS:** 600 & 603  
**ASME B16.34**

### FEATURES

- ▶ FLANGED, RF, RTJ, BW ENDS
- ▶ WELDED IN SEAT RINGS
- ▶ LOW EMISSIONS PACKING
- ▶ SINGLE PIECE STEM DESIGN
- ▶ SOLID FLEXIBLE WEDGE

## Pressure Seal Valves Gate, Globe & Check

GWC produces a wide variety of Cast Steel Pressure Seal Gate, Globe and Check valves. Other available pressure seal designs include Tilting Disc, Piston Type and Stop Check valves.



**SIZE RANGE:** 2" - 24"  
**PRESSURE CLASS:** ASME 600 - 2500  
**API STANDARDS:** 600  
**ASME B16.34**

### FEATURES

- ▶ FLANGED, RF, RTJ, BW ENDS
- ▶ WELDED IN SEAT RINGS
- ▶ LOW EMISSIONS PACKING
- ▶ SINGLE PIECE STEM DESIGN
- ▶ SOLID FLEXIBLE WEDGE

## Forged steel valves Gate, Globe & Check

GWC produces a wide variety of Forged Steel Gate, Globe, and Check valves. Other available designs include y-pattern globe and check valves and cryogenic valves.



**SIZE RANGE:** 1/4" - 3"  
**PRESSURE CLASS:** ASME 150 - 2500  
**API STANDARD:** 602  
**ASME B16.34**

### FEATURES

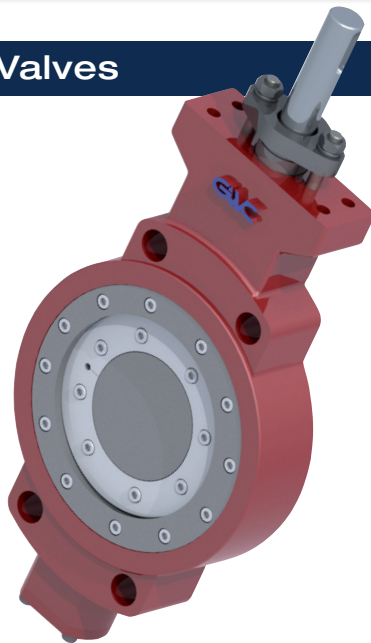
- ▶ FNPT, SW, FLANGED RF, RTJ, BW ENDS
- ▶ LOW EMISSIONS PACKING
- ▶ SINGLE PIECE STEM DESIGN
- ▶ SOLID WEDGE



## Triple Offset Butterfly Valves

GWC line of Triple Offset Butterfly valves are available in a wide range of pressure class, materials and body configurations.

This product is designed for Bi-directional Bubble Tight Shutoff being fully engineered and manufactured to exceed our clients stringent process requirements.



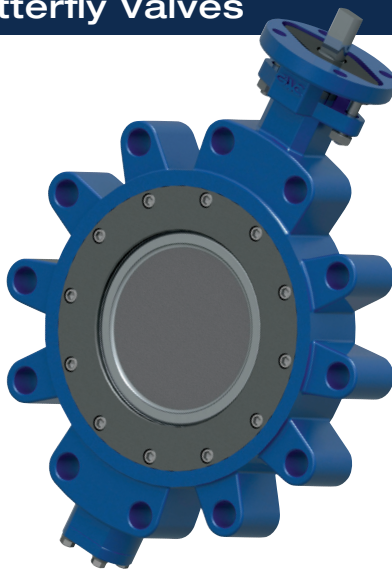
**SIZE RANGE: 2" - 30"**  
**PRESSURE CLASS: ASME 150 - 600**  
**API STANDARDS: 609**

### FEATURES

- ▶ TRIPLE ECCENTRIC DISC-SHAFT
- ▶ ANTI-BLOW OUT STEM
- ▶ BI-DIRECTIONAL
- ▶ FIRESAFE DESIGN
- ▶ LOW FRICTION BODY SEAT
- ▶ ZERO LEAKAGE
- ▶ WAFER, LUG & FLANGE TYPE

## High Performance Butterfly Valves

GWC Double Offset High Performance Butterfly valves are designed for shutoff and throttling control of liquids and gas. We offer a full range of materials to suit your specific applications.



**SIZE RANGE: 2" - 48"**  
**PRESSURE CLASS: ASME 150 - 600**  
**API STANDARDS: 609**

### FEATURES

- ▶ DOUBLE ECCENTRIC DISC-SHAFT
- ▶ ANTI-BLOW OUT STEM
- ▶ BI-DIRECTIONAL
- ▶ FIRESAFE DESIGN AVAILABLE
- ▶ LOW FRICTION BODY SEAT
- ▶ ZERO LEAKAGE WITH SOFT SEAT
- ▶ WAFER, LUG & FLANGE TYPE

## Resilient Seated Butterfly Valves

GWC offers a full line of Resilient Seated Butterfly Valves designed for Oil & Gas, HVAC and Industrial applications.

This product is economically priced for on/off and throttling services.



**SIZE RANGE: 2" - 48"**  
**PRESSURE CLASS: ASME 125 - 150**  
**API STANDARDS: 609**

### FEATURES

- ▶ SINGLE ECCENTRIC DISC-SHAFT
- ▶ ANTI-BLOW OUT STEM
- ▶ BI-DIRECTIONAL
- ▶ ZERO LEAKAGE
- ▶ WAFER, LUG & FLANGE TYPE